

MSR *SIZE 330*



PERFORMANCES

Unit codification
High speed ratio
Low speed ratio
Ratio code
Nominal output torque (S1-100%)
Maximum input speed
Inertia @ input (high speed ratio)
Inertia @ input (low speed ratio)
Efficiency at rated input speed
Weight
Max radial load output (@131rpm output, in the middle of the shaft)

PERFORMANCES

Unit codification
High speed ratio
Low speed ratio
Ratio code
Nominal output torque (S1-100%)
Maximum input speed
Inertia @ input (high speed ratio)
Inertia @ input (low speed ratio)
Efficiency at rated input speed
Weight
Max radial load output (@131rpm output, in the middle of the shaft)

Paint RAL 2002 & RAL 7016

Speed changer: voltage 24V DC,
switching current 200mA at 70°C, cable length 5m

Key ways following NFE 22.175

Motor must follow DIN 42955 class R

Oil inlet interface

Oil flow rate (input pressure)

Oil outlet interface

Technical Features

MSR 334		
i1		2.00
i2		9.88
i		2010
T2N	[Nm]	2500
N1B	[rpm]	6000
J1h	[Kg.mm ²]	56000
J1l	[Kg.mm ²]	10000
η	%	94
m	[kg]	280
Fr	[N]	30000

Technical Features

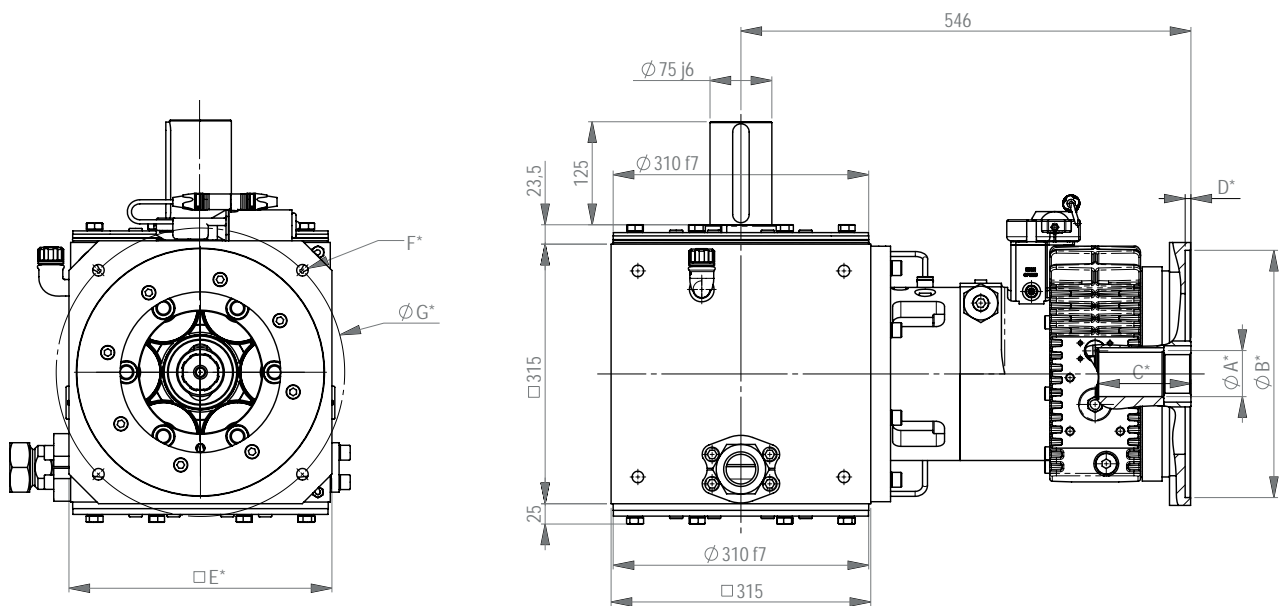
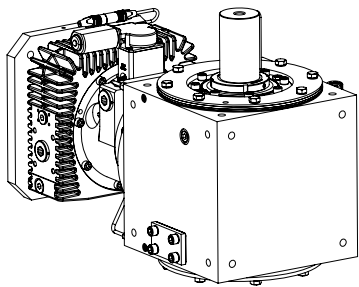
MSR 336		
i1		2.00
i2		7.66
i		2076
T2N	[Nm]	2500
N1B	[rpm]	6000
J1h	[Kg.mm ²]	51000
J1l	[Kg.mm ²]	13000
η	%	94
m	[kg]	276
Fr	[N]	30000

Additional Features

Oi		1/2"G
Of	[l/min]	9 (1,5 - 6 bars)
Oo		Tube 42mm

DIMENSIONS

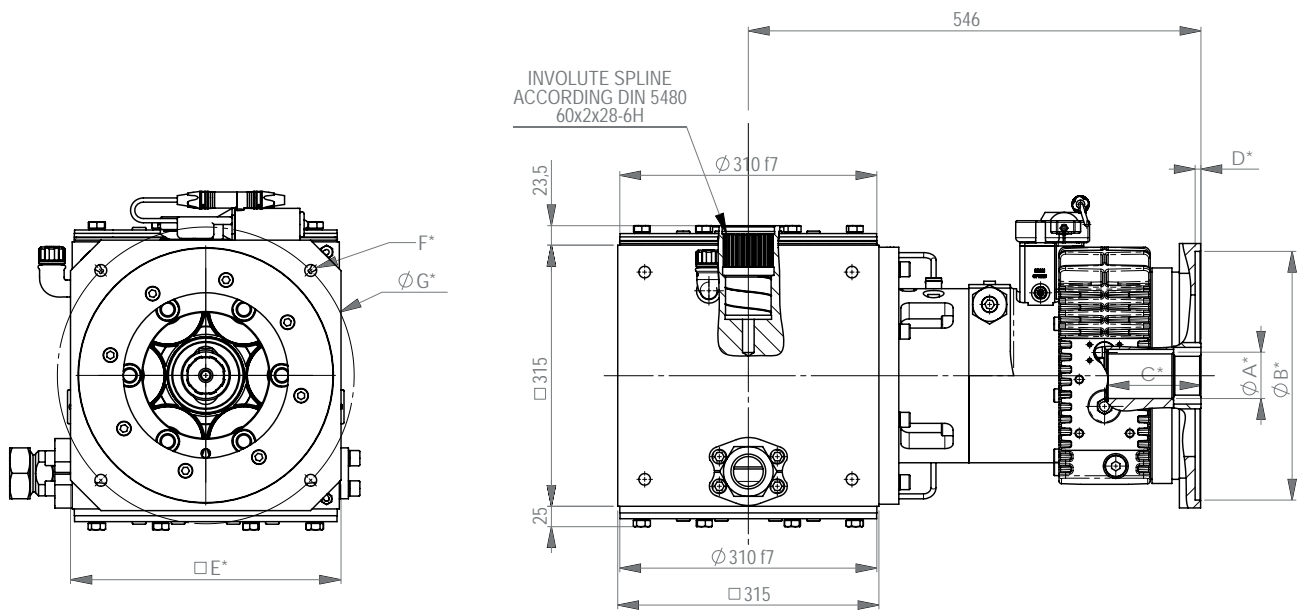
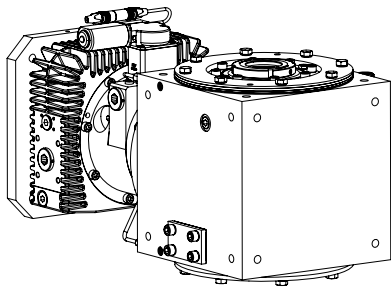
INPUT - TYPE A/F
OUTPUT - TYPE D



* A B C D E F G According to motor dimensions

DIMENSIONS

INPUT - TYPE A/F
OUTPUT - TYPE H



* A B C D E F G According to motor dimensions

ANDANTEX USA Inc.

1705 Valley Road,
Wanamassa, NJ 07712
800-713-6170

Fax 732-493-2949

E-mail info@andantex.com

WWW.ANDANTEX.COM