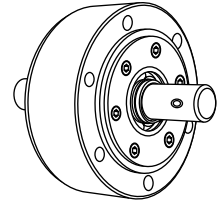


Torque limiters

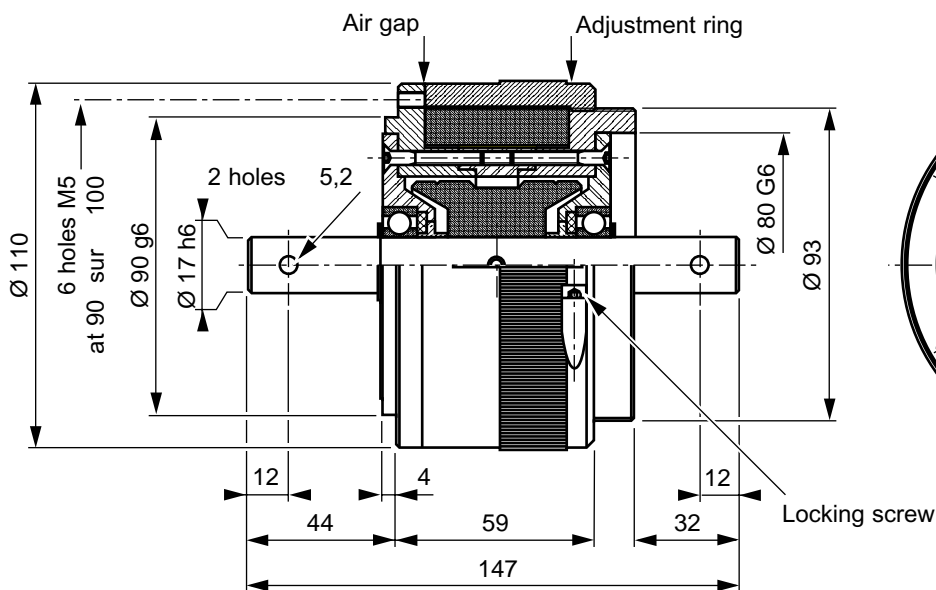
LC 50 ref: 807.355.01
LC 100 ref: 807.355.02

Specifications

Type		LC 50	LC 100
Transmission torque	(N.m)	Mini	2
		Maxi	6
	(ft.lbf)	Min	1.5
		Max	4.6
Internal rotor inertia		2,1.10 ⁻⁴ Kg.m ²	lb.ft² 49.10⁻⁴
External rotor inertia		60.10 ⁻⁴ Kg.m ²	lb.ft² 14.10⁻²
Weight		4,50 kg	lb 9.9
Heat dissipation	(W)*	75	



* Heat dissipation is the mechanical power ($P = cw$) maximum allowable.



Utilization

Mounting must be made without any stress.

Lubricated for life (other internal lubrication not allowed).

The transmission torque can be adjusted with an adjustment ring which is immobilized by a locking screw (zero air gap = minimal coupling)

The standard device is designed for horizontal and vertical shaft orientation, In normal use, the outside temperature of the device can increase up to 100 C, without damage.

Safety

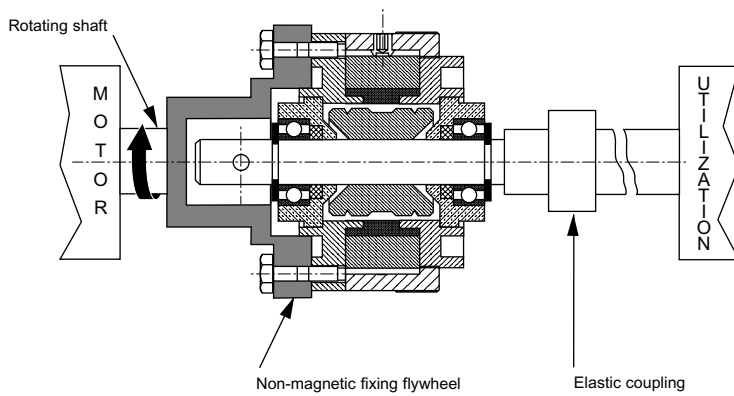
- If the device is to be used in dusty, humid or corrosive environment, special protection needs to be considered.

Maintenance

- Our After Sales service is at your disposal for maintenance servicing:
MEROBEL Inc. after sales
 1705 Valley Road
 Wanamassa, NJ 07712
 Ph: 732 493 3232
 Fx: 732 493 2949
- The mechanical mounting of this type of limiter forbids any dismantling by the user .

Recommended mounting principles

In line mounting



Parallel mounting

