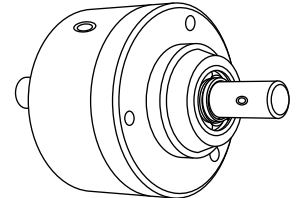


Torque limiters

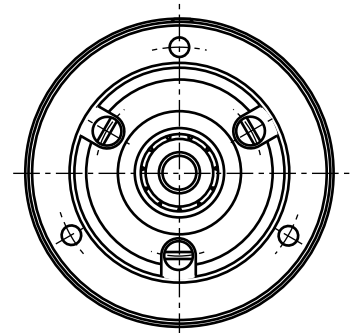
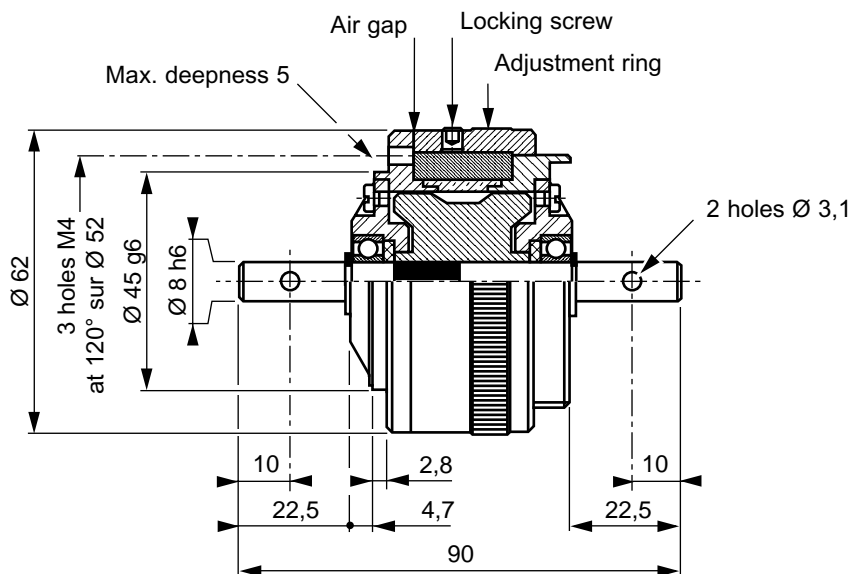
LC 10 ref: 807.341.01
 LC 20 ref: 807.341.02

Specifications

Type		LC 10	LC 20	
Transmission torque	(N.m)	Mini	0,30	0,60
		Maxi	1	2
	(ft.lbf)	Min	0.23	0.46
		Max	0.77	1.5
Internal rotor inertia		29.10 ⁻⁶ Kg.m ²	lb.ft² 67.10⁻⁵	
External rotor inertia		39.10 ⁻⁵ Kg.m ²	lb.ft² 9.10⁻³	
Weight		0,70 kg	lb 1.54	
Heat dissipation	(W)*		25	



* Heat dissipation is the mechanical power ($P = cw$) maximum allowable.



Utilization

- Mounting must be made without any stress.
Lubricated for life (other internal lubrication not allowed).
- The transmission torque can be adjusted with an adjustment ring which is immobilized by a locking screw (zero air gap = minimal coupling).
- The standard device is designed for horizontal and vertical shaft orientation,
- In normal use, the outside temperature of the device can increase up to 100°C, without damage.

Safety

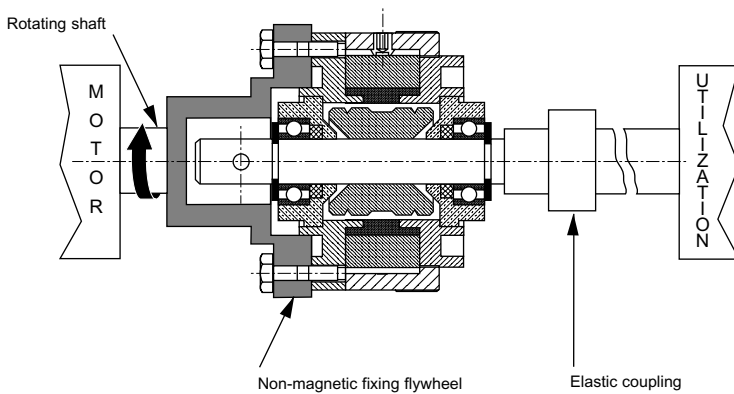
- If the device is to be used in dusty, humid or corrosive environment, special protection needs to be considered.

Maintenance

- The mechanical configuration of this type of limiter forbids any dismantling.

Recommended mounting principles:

In line mounting



Parallel mounting

