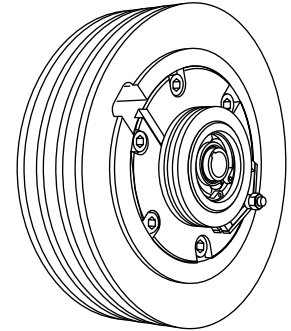


# Clutch ERAT 20

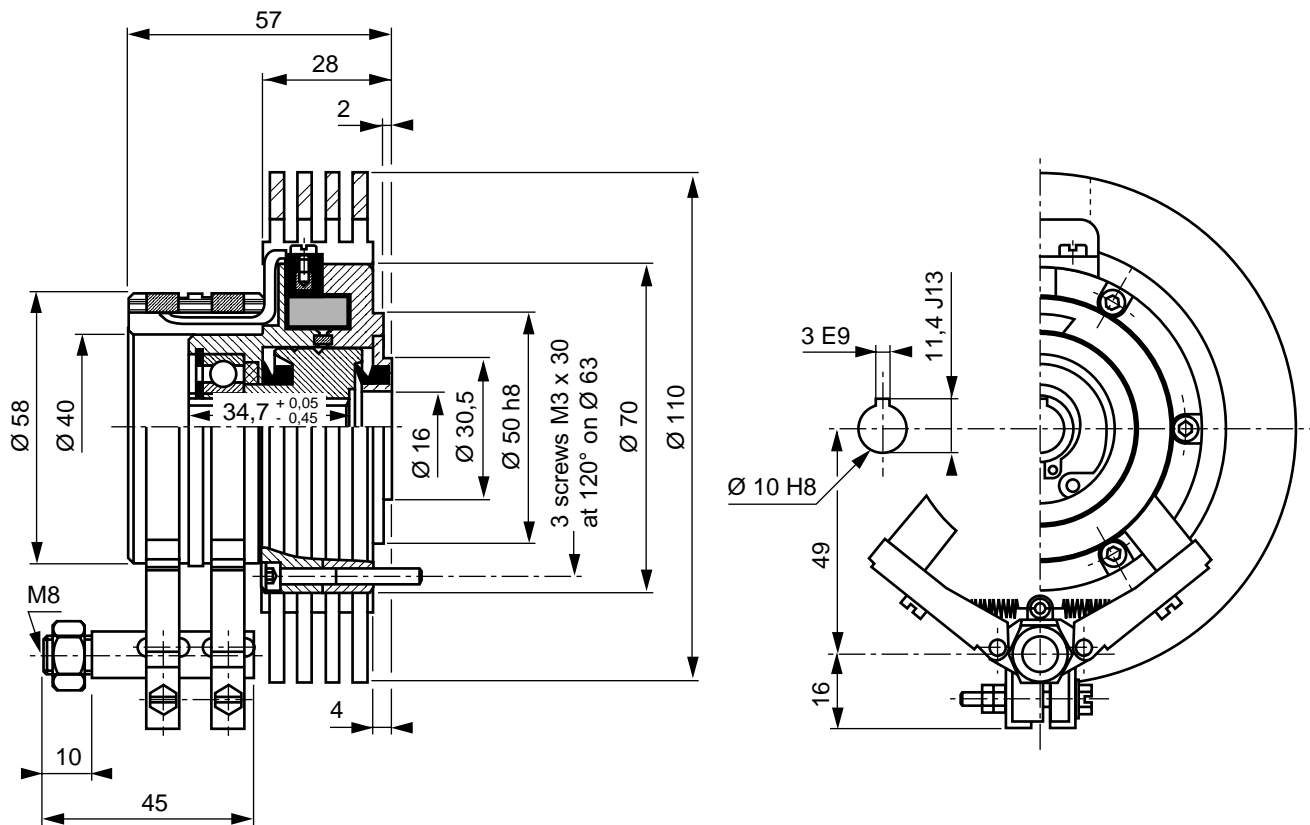
ref: 314.335.00

## Specifications

Nominal torque	2	N.m	<i>ft.lbf</i>	<b>1.5</b>
Minimal torque	0.04	N.m	<i>ft.lbf</i>	<b>0.03</b>
Coil resistance - 20°C			<i>W</i>	<b>24</b>
Rated current DC			<i>A</i>	<b>0.40</b>
Rotor inertia	16.10 <sup>-6</sup>	kg.m <sup>2</sup>	<i>lb.ft<sup>2</sup></i>	<b>3.85 10<sup>-4</sup></b>
Weight	1.2	kg	<i>lb</i>	<b>2.65</b>
Heat dissipation continuous sustained depending on external part rotation speed	<i>W</i> *	<b>60</b>	<b>135</b>	<b>180</b>
	(RPM)	0	1000	2000

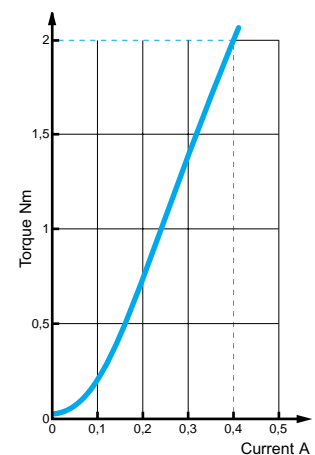


\*Heat dissipation is the mechanical power ( $P = c_w$ ) maximum allowable.



## Utilization

- Mounting must be made without any stress.  
Lubricated for life (other internal lubrication not allowed).  
The shaft should be lubricated upon assembly, to prevent seizing.
- Low DC current power supply for coil.  
(See MEROBEL Electronic data sheets)
- The standard device is designed for horizontal shaft orientation,  
and a minimal speed of 60 RPM. Maximum speed is 3000 RPM.  
(without exceeding the max. heat dissipation capability).
- For application Engineering, please contact our technical support.
- In normal use, the outside temperature of the device can increase up to 100°C,  
without damage.



## Safety

- If the device is to be used in dusty, humid or corrosive environment, special protection needs to be considered

## Maintenance

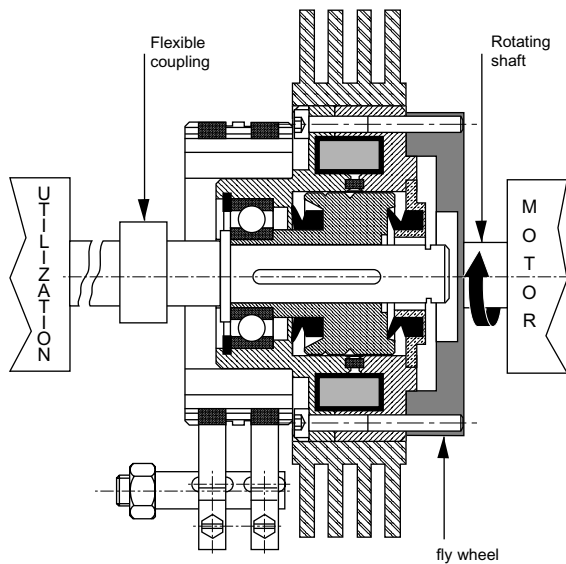
- Two procedures are available:
  - Full inhouse maintenance servicing:
 

<p><b>MEROBEL Inc.</b> after sales 1705 Valley Road Wanamassa, NJ 07712</p>	<p>Ph 732 493 3232 Fax 732 493 2949</p>
-------------------------------------------------------------------------------------	---------------------------------------------
  - Spare parts or repair kits (depending on maintenance level)
 

<ul style="list-style-type: none"> <li>- Kit (powder, ball bearings, seals, felts)</li> <li>- Coil</li> <li>- Rotor</li> <li>- Collector</li> <li>- Equipped brush holder</li> <li>- 10 brushes set</li> </ul>	<ul style="list-style-type: none"> <li>ref: 314.300.71</li> <li>ref: 314.320.06</li> <li>ref: 314.300.03</li> <li>ref: 314.310.40</li> <li>ref: 314.310.60</li> <li>ref: 314.310.62</li> </ul>
----------------------------------------------------------------------------------------------------------------------------------------------------------------------------------------------------------------	------------------------------------------------------------------------------------------------------------------------------------------------------------------------------------------------
- In any case, our After Sales service is at your disposal.

## Recommended mounting principles

**In line mounting**



**Parallel mounting**

