

Clutch

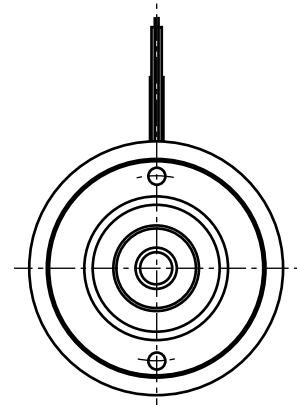
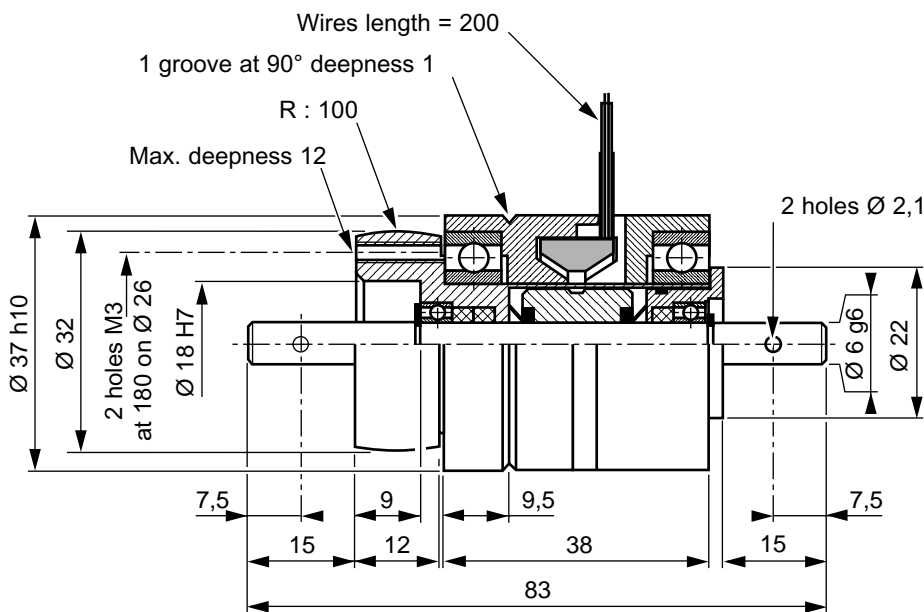
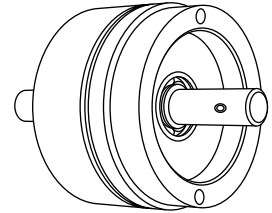
EFAS 2

ref: 323.400.00

Specifications

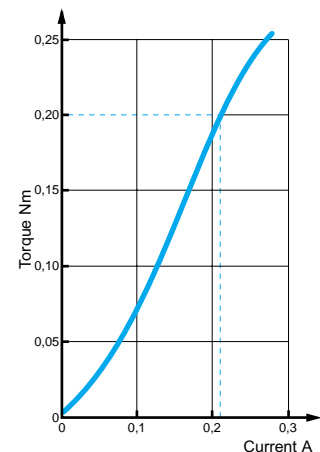
Nominal torque	0.2	N.m	<i>ft.lbf</i>	1.5
Minimal torque	0,01	N.m	<i>ft.lbf</i>	0.03
Coil resistance - 20°C			<i>W</i>	82
Rated current DC			<i>A</i>	0.21
Rotor inertia	$0.8 \cdot 10^{-6}$	kg.m ²	<i>lb.ft²</i>	$18.6 \cdot 10^{-4}$
Weight	0,40	kg	<i>lb</i>	0.88
Heat dissipation continuous sustained			<i>W *</i>	12

* Heat dissipation is the mechanical power ($P = c_w$) maximum allowable.



Utilization

- Mounting must be made without any stress.
Lubricated for life (other internal lubrication not allowed).
- Low DC current power supply for coil.
(See MEROBEL Electronic data sheets)
- The standard device is designed for horizontal shaft orientation,
and a minimal speed of 60 RPM. Maximum speed is 3000 RPM
(without exceeding the max. heat dissipation capability).
- For Engineering application, please contact our technical support.
- In normal use, the outside temperature of the device can increase up to 100°C,
without damage.



Safety

- If the device is to be used in dusty, humid or corrosive environment, special protection needs to be considered.

Maintenance

- Our After Sales service is at your disposal for maintenance servicing:

MEROBEL Inc. after sales
 1705 Valley Road
 Wanamassa, NJ 07712

Ph 732 493 3232
 Fax 732 493 2949

Recommended mounting principles

