

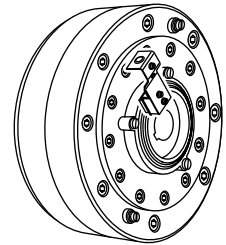
Clutch

EAT 1200

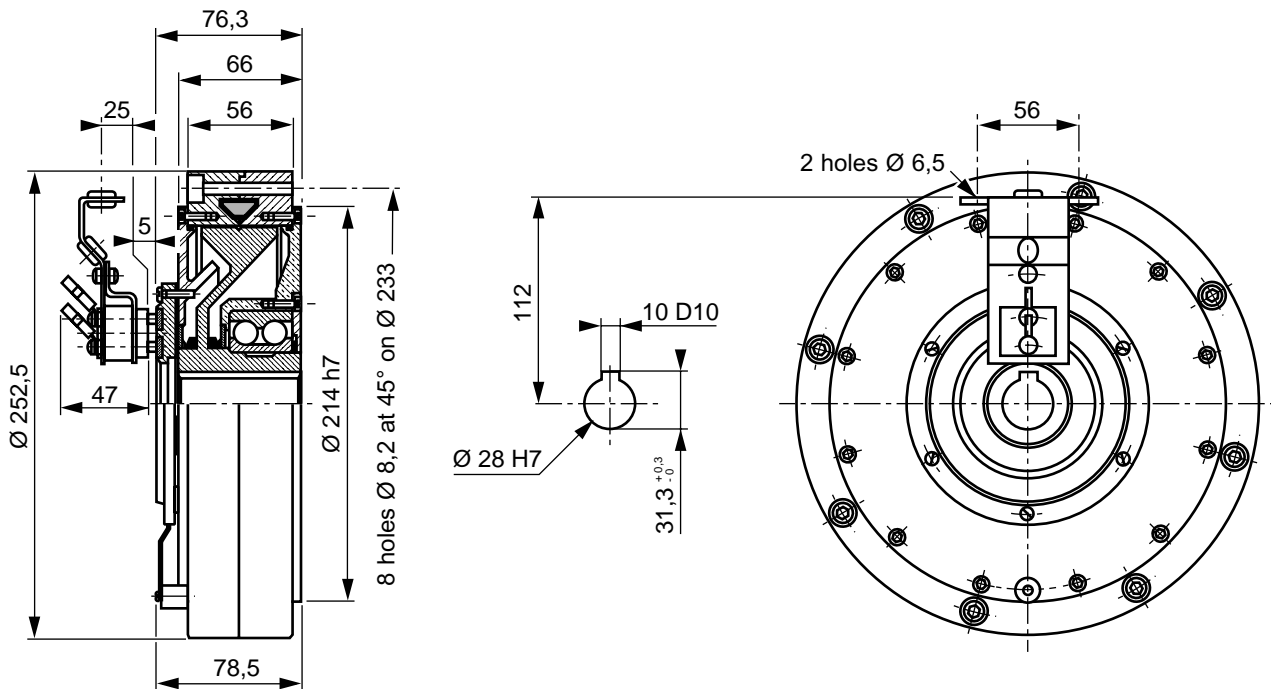
ref: 317.410.00

Specifications

Nominal torque	120	N.m	<i>ft.lbf</i>	90
Minimal torque	1.2	N.m	<i>ft.lbf</i>	0.9
Coil resistance - 20°C			<i>W</i>	12.5
Rated current DC			<i>A</i>	1.1
Rotor inertia	26.5.10 ⁻³	kg.m ²	<i>lb.ft²</i>	615.10⁻³
Weight	17	kg	<i>lb</i>	37.5
Heat dissipation continuous sustained depending on external part rotation speed	<i>W</i> *	275	700	1000
	(RPM)	0	1000	2000

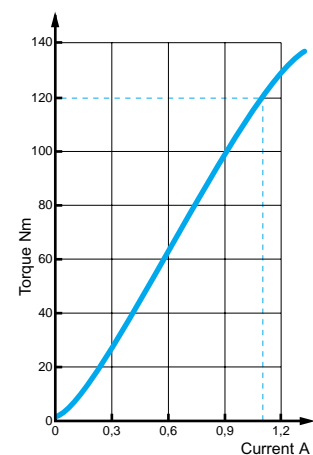


* Heat dissipation is the mechanical power ($P = cw$) maximum allowable.



Utilization

- Mounting must be made without any stress.
Lubricated for life (other internal lubrication not allowed).
The shaft should be lubricated upon assembly, to prevent seizing.
- Low DC current power supply for coil.
(See MEROBEL Electronic data sheets)
- The standard device is designed for horizontal shaft orientation,
and a minimal speed of 60 RPM. Maximum speed is 2000 RPM
(without exceeding the max. heat dissipation capability).
- For Engineering application, please contact our technical support.
- In normal use, the outside temperature of the device can increase up to 100°C,
without damage.



Safety

- If the device is to be used in dusty, humid or corrosive environment, special protection needs to be considered.

Maintenance

- Two procedures are available:

- Full inhouse maintenance servicing:

MEROBEL Inc. after sales
1705 Valley Road
Wanamassa, NJ 07712

Ph 732 493 3232

Fax 732 493 2949

- Spare parts or repair kits (depending on maintenance level):

- Kit (powder, ball bearings, seals, felts) ref: 812.040.00

- Coil ref: 317.400.10

- Rotor ref: 316.200.04

- Collector ref : 806.599.01

- Equipped brush holder ref: 317.400.60

- 10 brushes set ref: 317.400.65

- In any case, our After Sales service is at your disposal.

Recommended mounting principles

