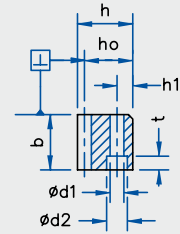
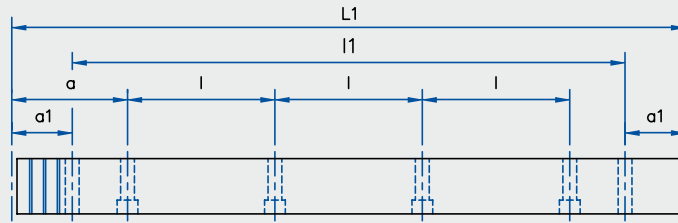
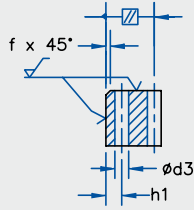


# MODULAR RACK & PINION SYSTEM

## SERIES A20

Quenched & Tempered Material  
Quality DIN 8 e 27 (-AGMA10)  
20° Pressure Angle



Module	L1	l1	teeth	b	h	ho	f	a	l	No. holes	h1	d1	d2	t	a1	d3	Fp	mass kg.	Part No.	
2.0	502.7	440.1	80	25	24	22	2	62.83	125.66	4	8	7	11	7	31.3	5.7		2.1	A20-020-050	
2.0	502.7	440.1	80	25	24	22	2			without holes								2.1	A20-021-050	
2.0	1005.3	942.7	160	25	24	22	2	62.83	125.66	8	8	7	11	7	31.3	5.7	0.063	4.2	A20-020-100	
2.0	1005.3	942.7	160	25	24	22	2			without holes								0.063	4.2	A20-021-100
2.0	Companion Rack for assembly																		A20-021-999	
3.0	508.9	440.1	54	30	29	26	2	63.62	127.23	4	9	10	15	9	34.4	7.7		3	A20-030-050	
3.0	508.9	440.1	54	30	29	26	2			without holes								3	A20-031-050	
3.0	1017.9	949.1	108	30	29	26	2	63.62	127.23	8	9	10	15	9	34.4	7.7	0.071	6	A20-030-100	
3.0	1017.9	949.1	108	30	29	26	2			without holes								0.071	6	A20-031-100
3.0	Companion Rack for assembly																		A20-031-999	
4.0	502.7	427.7	40	40	39	35	3	62.83	125.66	4	12	10	15	9	37.5	7.7		5.3	A20-040-050	
4.0	502.7	427.7	40	40	39	35	3			without holes								5.3	A20-041-050	
4.0	1005.3	930.3	80	40	39	35	3	62.83	125.66	8	12	10	15	9	37.5	7.7	0.08	10.5	A20-040-100	
4.0	1005.3	930.3	80	40	39	35	3			without holes								0.08	10.5	A20-041-100
4.0	Companion Rack for assembly																		A20-041-999	

Material AISI 4140 (42CrMo4V) with tensile strength = 900 N/mm<sup>2</sup> (130,500 PSI).  
Back and contact face ground. Rack ends are machined for continuous mounting.  
Fp is the max cumulative pitch error for the corresponding rack length.  
Dimensions are in mm and are subject to change - consult factory.