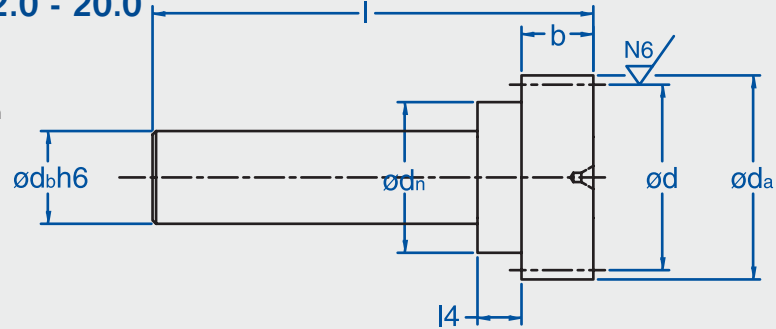


CIRCULAR PITCH 2.0 - 20.0

Straight teeth
 Pressure angle $\phi=20^\circ$
 Material AISI 5115 (16MnCr5)
 Case hardened, ground & crowned teeth
 Quality 6f24 (~AGMA 11)



No. teeth	pitch	d_a	d	$d_b h6$	d_n	b	l	$l 4$	Part No.
30	2.0	20.4	19.1	12	17	9.5	70	2.5	403 040*
20	5.0	35.0	31.83	12	20	11.5	90	4.5	403 041
20	5.0	35.0	31.83	20	26	11.5	90	4.5	404 540
20	5.0	35.0	31.83	20	26	14.5	90	11.5	404 541
20	7.5	52.5	47.75	20	25	19.5	108	8.0	404 542
20	7.5	52.5	47.75	25	32	19.5	108	8.0	406 040
20	10.0	70.0	63.66	25	32	29.5	162	12.5	406 041
14	10.0	52.5	46.47	25	32	29.5	162	12.5	406 042
20	10.0	70.0	63.66	40	50	29.5	162	12.5	409 040
20	12.5	87.5	79.58	40	50	40	239	20.0	409 041
14	12.5	66.0	58.09	40	45	40	196	18.0	903 547
26	12.5	111.4	103.45	60	85	40	277	18.0	412 041
20	16.0	112.1	101.86	60	85	50	302	40.0	412 044
20	20.0	140.1	127.32	60	85	60	302	55.0	412 043
20	20.0	140.1	127.32	90	105	60	290	20.0	418 040

* Material: Nitralloy 135 (EGT 100) nitrided.
 Dimensions are in mm and are subject to change - consult factory.