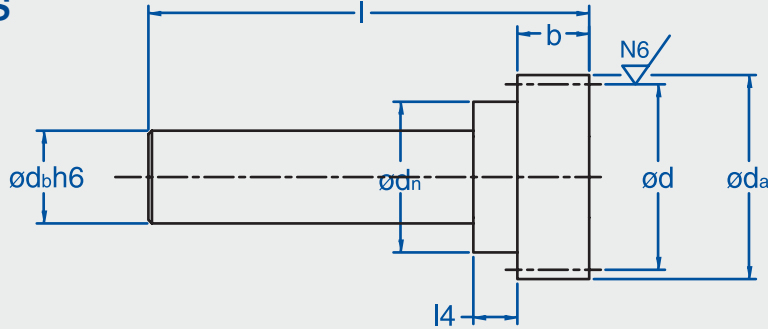


MODULAR RACK & PINION SYSTEM

PINIONS SHAFTS



MODULE 1.0 - 10.0

Straight teeth
Pressure angle $\phi=20^\circ$
Material AISI 5115 (16MnCr5)
Case hardened, ground & crowned teeth
Quality 6f24 (~AGMA 11)

No. teeth	Module	d_a	d	δ_{bh6}	d_n	b	l	$l4$	Part No.
20	1	22.0	20.0	12	16	15	70	2.5	201 020
25	1	27.0	25.0	12	16	9.5	70	2.5	201 025
16	1.5	27.9	24.9	12	16	20	90	4.5	201 116
20	1.5	33.0	30.0	20	26	20	110	4.5	201 120
16	2	37.2	33.2	20	26	20	110	8	201 216
20	2	44.0	40.0	25	32	20	140	8	201 220
20	2.5	55.0	50.0	25	32	25	145	8	201 320
16	3	55.8	49.8	25	32	30	150	8	201 416
20	3	66.0	60.0	40	50	30	190	12.5	201 420
20	4	88.0	80.0	40	50	40	200	18	201 520
20	5	110.0	100.0	60	70	50	310	35	201 620
20	6	132.0	120.0	60	70	60	320	35	201 720
20	8	176.0	160.0	60	70	80	340	35	201 820
20	8	176.0	160.0	90	105	80	385	35	201 821
16	10	186.0	166.0	90	105	100	410	40	201 916