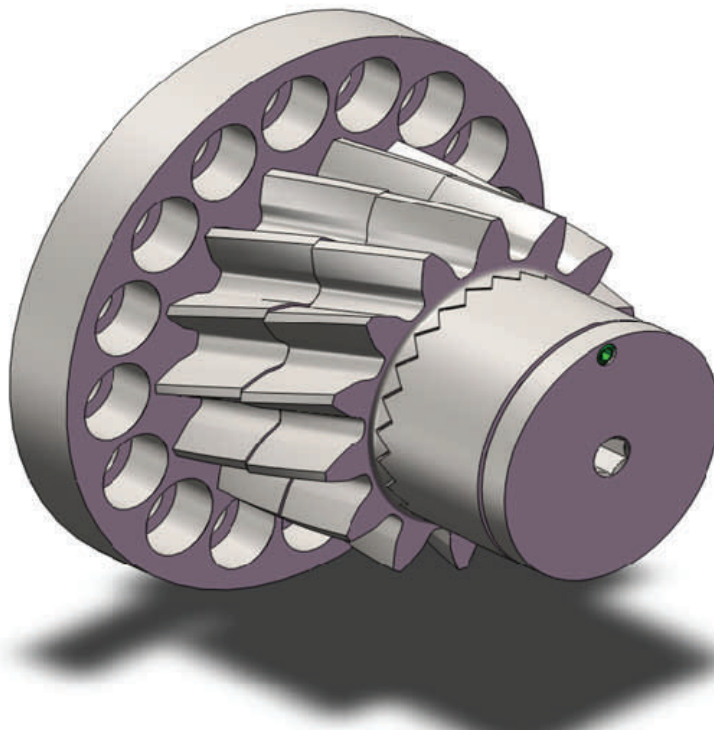


**ANDANTEX**  
USA Inc.

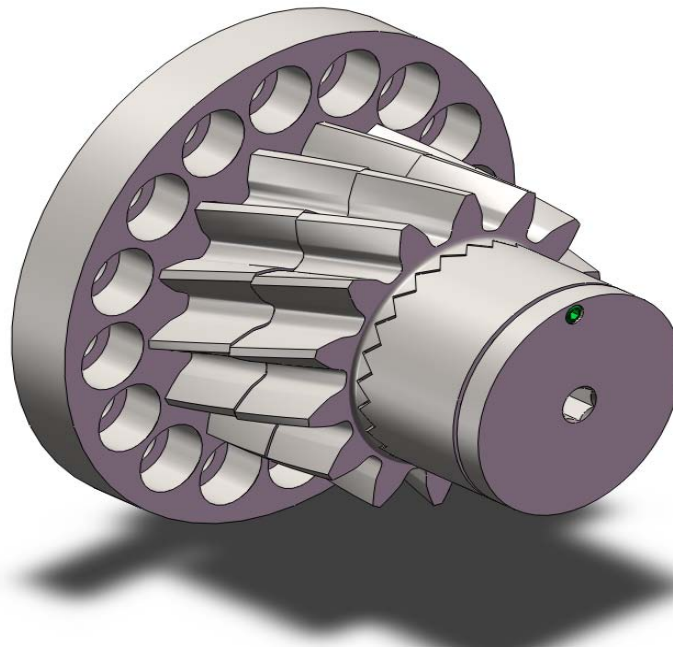
**NEW !! PRELOADED DOUBLE PINION  
WITH STRAIGHT & HELICAL TEETH**



1705 Valley Rd., Wanamassa, New Jersey 07712  
web: [andantex.com](http://andantex.com), e-mail: [info@andantex.com](mailto:info@andantex.com), phone 800 713 6170

# NEW ! Preloaded Double Pinion with Straight & Helical Teeth

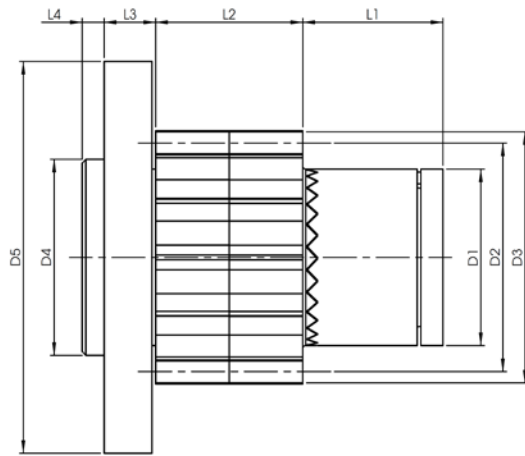
Our new Preloaded Double Pinion enables a backlash-free drive in connection with a rack. A flange acc. to ISO 9409-1 connects the Preloaded Double Pinion with a gearbox. The Preloaded Double Pinion is available as either helical or straight teeth type.



**Type:**

<b>Material:</b>	Steel 1.7131 [16MnCr5]
<b>Case-hardened</b>	
<b>Ground teeth</b>	
<b>Straight teeth or Helical, left hand, helix angle</b>	19° 31' 42''
<b>Pressure angle</b>	20°
<b>Toothing quality DIN</b>	6 e25 (~AGMA11)
<b>Module</b>	3 - 6 & 8

# Preloaded Double Pinion



Material Stahl 1.7131  
[16MnCr5]

Case-Hardened

Toothing quality 6 e25 (~AGMA 11)

### straight teeth

Module	No. teeth	$\beta$	x	D <sub>1</sub>	D <sub>2</sub>	D <sub>3</sub>	D <sub>4</sub>	D <sub>5</sub>	L <sub>1</sub>	L <sub>2</sub>	L <sub>3</sub>	L <sub>4</sub>	Part No.
3	15	0°	0.167	36	45	52	40	80	23	30	11	4	113-030-015
4	14	0°	0.250	45	56	66	50	100	38	40	14	6	113-040-014
5	15	0°	0.500	65	75	90	80	160	39	50	16	6	113-050-015
6	16	0°	0.500	85	96	114	100	180	52	60	19	10	113-060-016
8	14	0°	0.118	90	112	130	100	200	60	80	26	10	113-080-014

### helical teeth

Module	No. teeth	$\beta$	x	D <sub>1</sub>	D <sub>2</sub>	D <sub>3</sub>	D <sub>4</sub>	D <sub>5</sub>	L <sub>1</sub>	L <sub>2</sub>	L <sub>3</sub>	L <sub>4</sub>	Part No.
3	14	19° 31' 42''	0.239	36	46	52	40	80	23	30	11	4	123-030-014
4	13	19° 31' 42''	0.353	45	55	66	50	100	38	40	14	6	123-040-013
5	14	19° 31' 42''	0.573	65	74	90	80	160	39	50	16	6	123-050-014
6	15	19° 31' 42''	0.542	85	95	114	100	180	52	60	19	10	123-060-015
8	13	19° 31' 42''	0.228	90	110	130	100	200	60	80	26	10	123-080-013

x = addendum modification

### Load tables:

Values determined under following conditions:  
speed: 2,5 m/s; K<sub>A</sub> = 1,25; 20.000h; grease

### straight teeth

Module	No. teeth	x	Max. Torque [Nm]		Speed [r.p.m]	Flange
			Without preload	With max. preload		
3	15	0.167	109	55	1061	ISO 9409-1 - 63
4	14	0.250	237	119	853	ISO 9409-1 - 80
5	15	0.500	623	312	637	ISO 9409-1 - 125
6	16	0.500	1199	600	497	ISO 9409-1 - 140
8	14	0.118	1847	924	426	ISO 9409-1 - 160

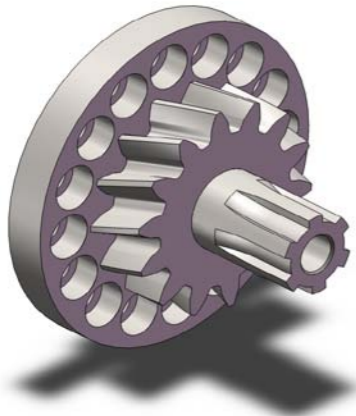
### helical teeth

Module	No. teeth	x	Max. Torque [Nm]		Speed [r.p.m]	Flange
			Without preload	With max. preload		
3	14	0.239	147	74	1071	ISO 9409-1 - 63
4	13	0.353	305	153	865	ISO 9409-1 - 80
5	14	0.573	594	297	643	ISO 9409-1 - 125
6	15	0.542	1125	563	500	ISO 9409-1 - 140
8	13	0.228	1911	956	433	ISO 9409-1 - 160

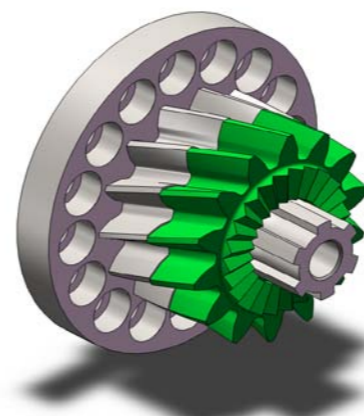
# Preloaded Double Pinion

## Assembly instruction

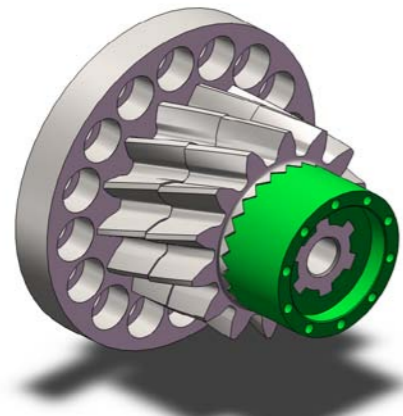
1 assembly to the gearbox



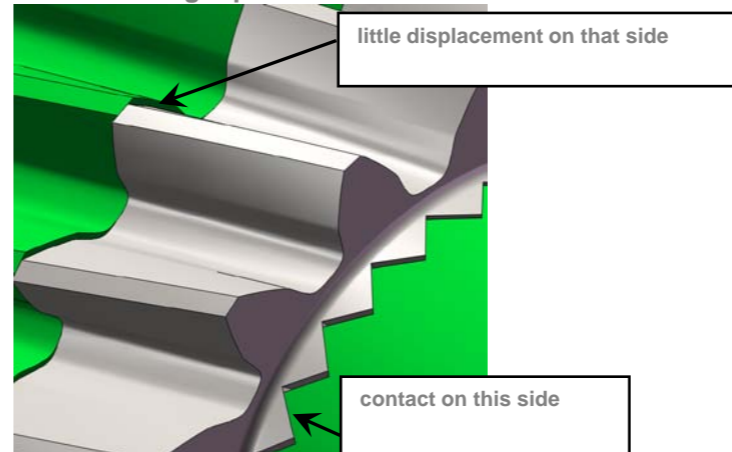
2 attach the preloaded pinion on the shaft



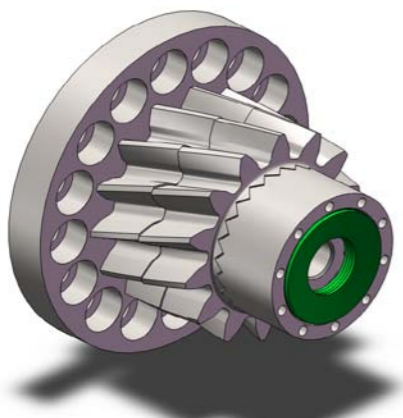
3 put on the pressure part with Hirth-Coupling



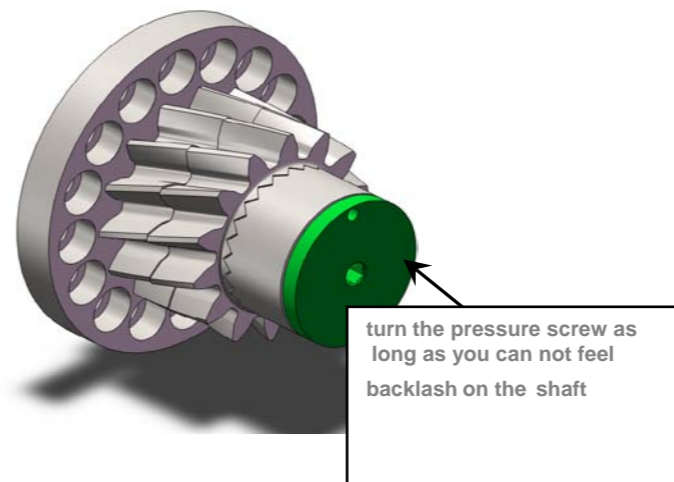
4 choose the right position



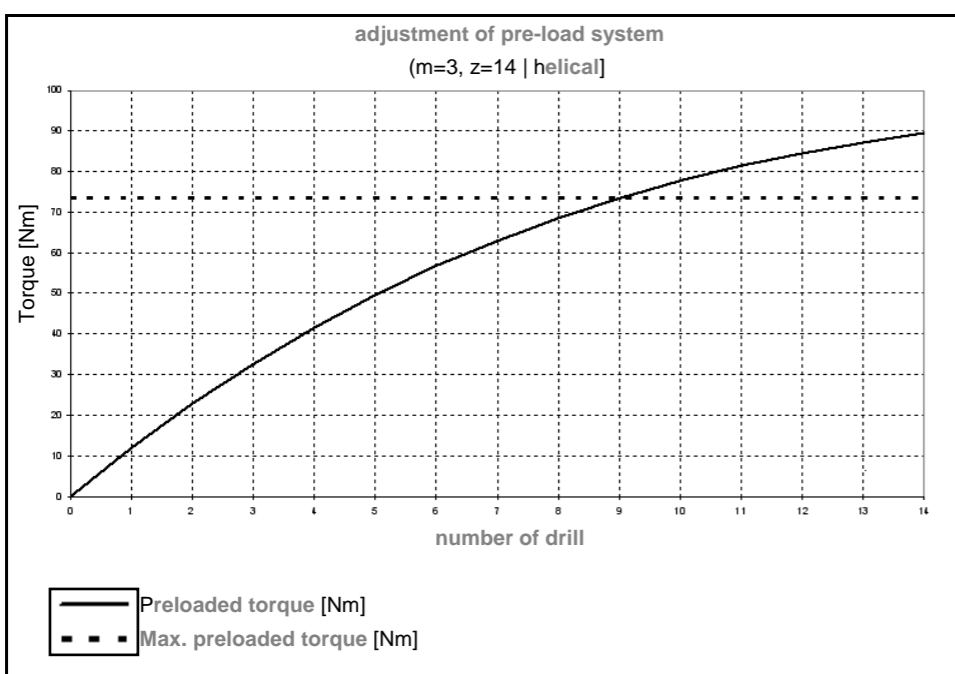
5 set up the disc springs



6 insert the pressure screw and preload until backlash free



7 use the diagram and turn the drill as requested



8 insert the fixing screw

