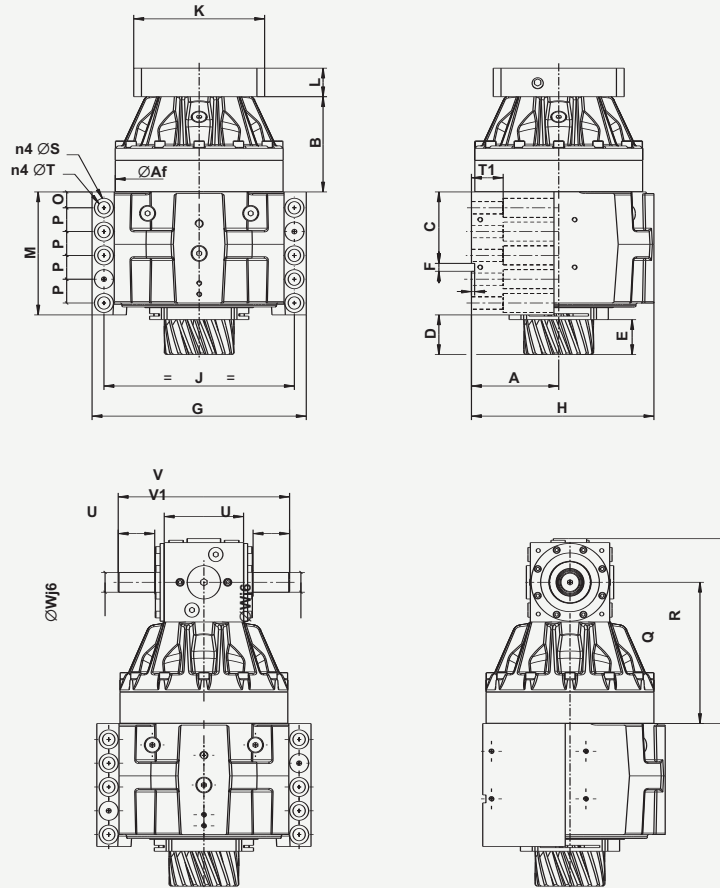


KRP+ DRP+

Single DRIVE / TwinDRIVE

KRPX+_-M...

KRPX+_-R...



| mm | Size 2 | | Size 3 | Size 4 |
|-------------------------|----------|-----|----------|----------|
| | Tamaño 2 | | Tamaño 3 | Tamaño 4 |
| | 1S | 2S | | |
| A | 110 | | 135 | 158 |
| \varnothing A1 | 211.5 | | 254.5 | 284.9 |
| B | 90 | 120 | 142 | 176.5 |
| C | 90 | | 105 | 122.5 |
| D | 50 | | 60.5 | 78 |
| E | 44 | | 55 | 66 |
| F | 10H6 | | 12H6 | 15H6 |
| G | 270 | | 320 | 360 |
| H | 230 | | 280 | 316 |
| I | 4 | | 5 | 6 |
| J | 240 | | 290 | 320 |
| M | 155 | | 190 | 210 |

| mm | Size 2 | | Size 3 | Size 4 |
|------------------------|----------|-----|----------|----------|
| | Tamaño 2 | | Tamaño 3 | Tamaño 4 |
| | 1S | 2S | | |
| O | 20 | | 25 | 30 |
| P | 30 | | 35 | 40 |
| Q | 180.5 | 178 | 207.5 | 267 |
| R | 264 | 233 | 275 | 350.5 |
| n4 | 10 | | 10 | 10 |
| \varnothing S | 24 | | 26 | 33 |
| \varnothing T | 15.5 | | 17.5 | 22 |
| T1 | 40 | | 50 | 60 |
| U | 44.5 | 46 | 53.5 | 44.5 |
| V | 289 | 216 | 262 | 289 |
| V1 | 160 | 100 | 125 | 160 |
| \varnothing W | 35 | 25 | 30 | 35 |

K - L - M - N : according to the chosen motor - En función del motor seleccionado
 1 stage / 1 Etapa : 1S - 2 stages / 2 Etapas : 2S